



## Linda Road

Fawley, SO45 1DJ

- DETACHED BUNGALOW
- 2 BEDROOMS
- SIZEABLE SHED
- MODERN KITCHEN
- OFF-ROAD PARKING
- 1 BATHROOM
- LARGE GARDEN
- OPEN PLAN LIVING
- GENEROUS PATIO & LAWN
- GARAGE

Asking price £369,000







### ENTRANCE HALL

Entrance hall is welcoming you in to the property and leads you in to all other rooms. Newly decorated throughout.

### LIVING ROOM

Modern and newly decorated with new wooden doors, featured fireplace surroundings with the possibility to install a fireplace. Open living and bright and airy feel.



### KITCHEN/DINING ROOM

This brand new modern open plan kitchen/dining area has been refurbished and decorated to a high and tasteful standard. Double glass doors bringing ample light and leading out to a fenced in back garden.

### Master bedroom

This generous sized master bedroom has wall to wall built in wardrobes and has been modernised and decorated tastefully.

### BEDROOM 2

The second bedroom is currently decorated as a beautiful and neutral baby room, but is also another a double bedroom.

### BATHROOM

Modernised bathroom/wetroom with a shower cubical, wash basin, toilet and a window.

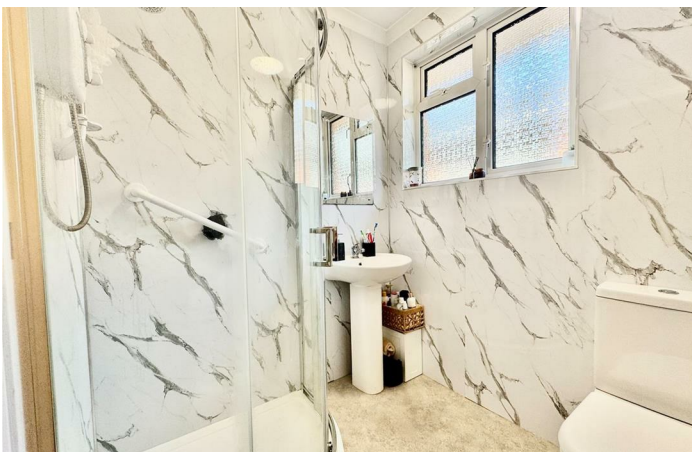
### Garden

Double doors leads out to a decent size all fenced in back garden with a Jacuzzi, tool shed, vegetable patch and a generous outbuilding used as a garage/man-cave! This has been built to livable standard and can easily be converted into a home office or even a granny annex.



### Laundry room

This property comes with a laundry room/ Pantry. Could be converted in to a third bedroom if needed.









Local Authority **NFDC**  
Council Tax Band **C**  
EPC Rating



#### **Citrine Estates Office**

7 High Street, Hythe, Southampton,  
SO45 6AG

#### **Contact**

023 81980 023  
[christina@citrine-estates.co.uk](mailto:christina@citrine-estates.co.uk)  
[www.citrine-estates.co.uk](http://www.citrine-estates.co.uk)

Agents Note: Whilst every care has been taken to prepare these particulars, they are for guidance purposes only. All measurements are approximate and for general guidance purposes only and whilst every care has been taken to ensure accuracy, they should not be relied upon and potential buyers/tenants are advised to recheck the measurements.